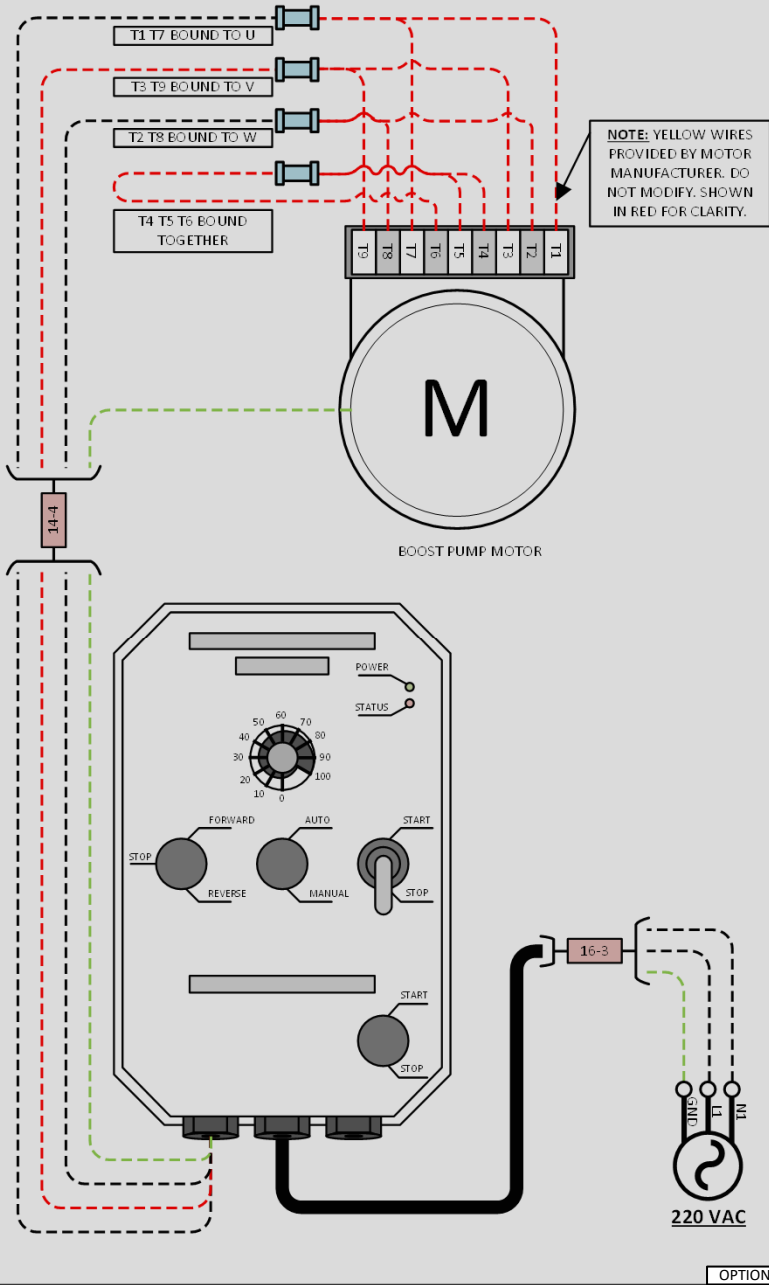


Detail View: Boost Pump Kit (Optional)



List of Symbols: KEY

BLK	WIRE COLOR LABEL – INDICATES A BLACK WIRE
RED	WIRE COLOR LABEL – INDICATES A RED WIRE
WHT	WIRE COLOR LABEL – INDICATES A WHITE WIRE
GRN	WIRE COLOR LABEL – INDICATES A GREEN WIRE
YEL	WIRE COLOR LABEL – INDICATES A YELLOW WIRE
ORG	WIRE COLOR LABEL – INDICATES AN ORANGE WIRE
BLU	WIRE COLOR LABEL – INDICATES A BLUE WIRE
	WIRE GAUGE LABEL – INDICATES A GAUGE FOR A CABLE OF MULTIPLE WIRES, FORMATED AS (WIRE GAUGE)-(NUMBER OF WIRES IN CABLE)
	WIRE GAUGE LABEL – INDICATES A GAUGE FOR A SINGLE WIRE
	CABLING – JST, CAT5, OR PRE-FABRICATED CABLES
	WIRING – SINGLE WIRE BLACK OR WHITE – TYPICAL COMM COLOR
	WIRING – SINGLE WIRE RED – TYPICAL ENERGIZED COLOR
	WIRING – SINGLE WIRE YELLOW – TYPICAL NEUTRAL COLOR
	WIRING – SINGLE WIRE GREEN – TYPICAL GROUNDING COLOR
	WIRING – SINGLE WIRE ORANGE – TYPICAL POWER SIGNALING COLOR
	WIRING – SINGLE WIRE BLUE – TYPICAL POWER SIGNALING COLOR
	EXTERNAL POWER SOURCE – POWER EXTERNAL TO UNIT, PROVIDED TO UNIT – 220VAC

Revision History: LB-400/400S

Rev No:	Date:	Description:
A	09/21/2023	Initial Wiring Diagram for LandBased – 400/400S Modular Systems

- Control System:
- Full Manual System
  - 220VAC Input Voltage
- Applicable System Numbers:
- LB-1,800M-220V
  - LB-2,800M-220V
  - LB-4,000M-220V

Land Based – 400/400S

Revision: A  
 Rev Date: 09/21/2023  
 Print Date: 09/21/2023  
 Drawn by: LSS

Katadyn Desalination